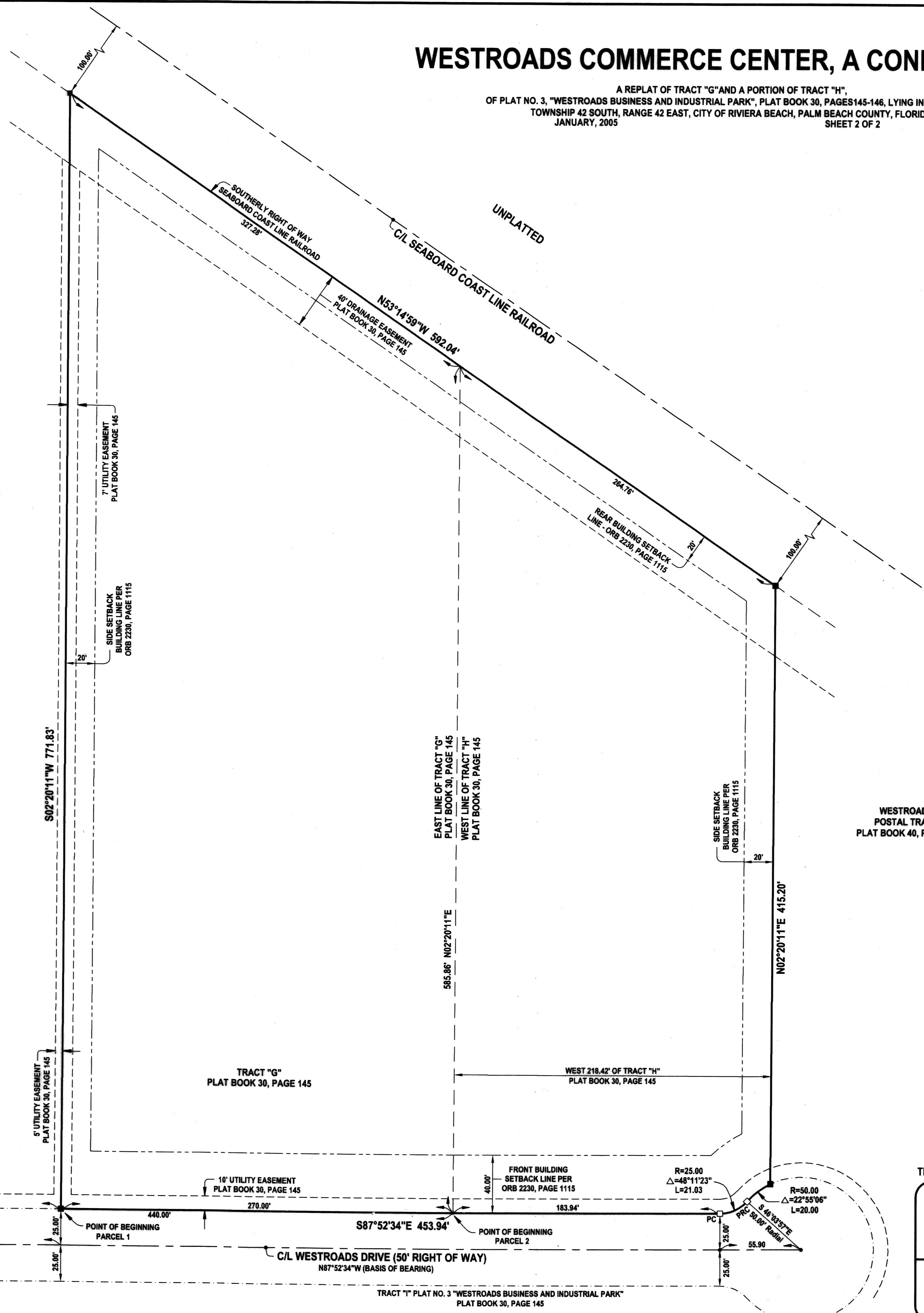
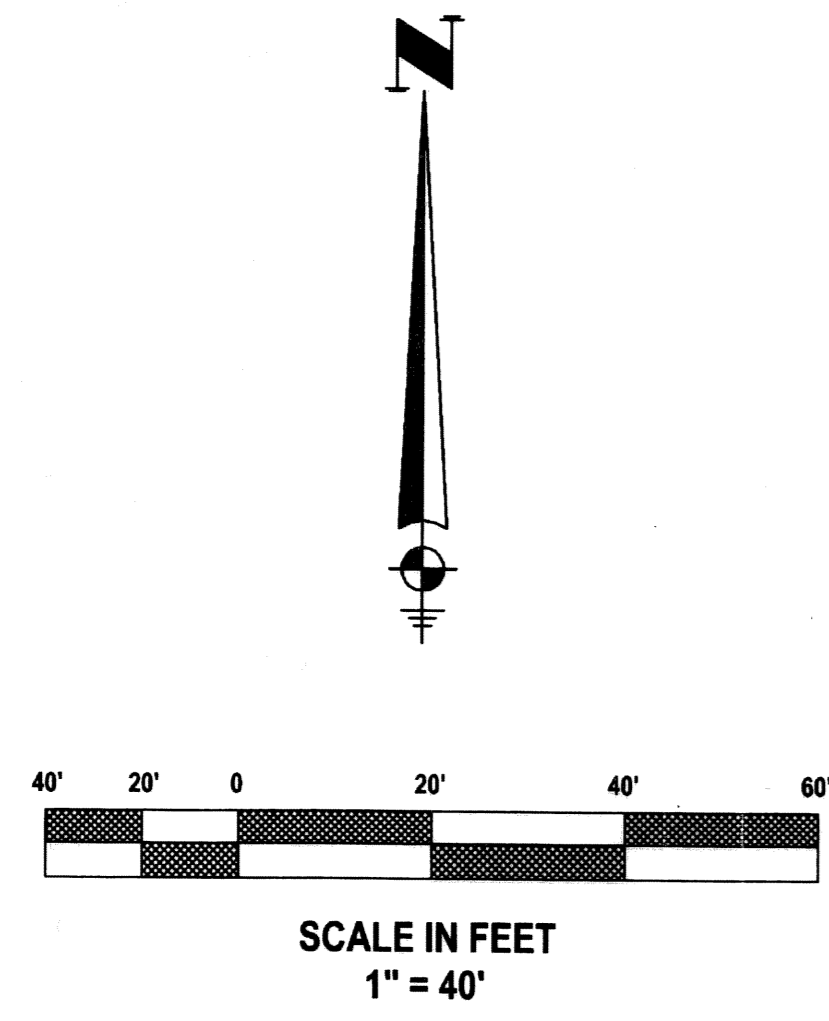


79

WESTROADS COMMERCE CENTER, A CONDOMINIUM

A REPLAT OF TRACT "G" AND A PORTION OF TRACT "H",
OF PLAT NO. 3, "WESTROADS BUSINESS AND INDUSTRIAL PARK", PLAT BOOK 30, PAGES 145-146, LYING IN SECTION 36,
TOWNSHIP 42 SOUTH, RANGE 42 EAST, CITY OF RIVIERA BEACH, PALM BEACH COUNTY, FLORIDA
JANUARY, 2005
SHEET 2 OF 2

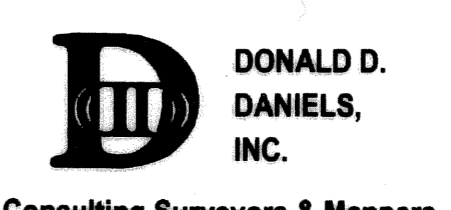


PLAT OF NATIONAL
DISTRIBUTING COMPANY, INC.
PLAT BOOK 58, PAGES 198-199

WESTROADS
POSTAL TRACT
PLAT BOOK 40, PAGE 19

POINT OF COMMENCEMENT
NORTHEAST CORNER TRACT "B"
PLAT NO. 2 WESTROADS BUSINESS
AND INDUSTRIAL PARK

THIS INSTRUMENT WAS PREPARED BY DONALD D. DANIELS IN THE OFFICES OF DONALD D. DANIELS, INC.



DONALD D. DANIELS, INC.
Consulting Surveyors & Mappers
Florida Certificate LB No. 4165
725 North A-1-A, Suite C-111
Jupiter, Florida 33477
Tel: (561) 747-9894

WESTROADS COMMERCE CENTER, A CONDOMINIUM

REFERENCE: 30/145	REVISIONS:	SCALE: 1" = 40'
OFFICE: D. OSHA		DWG. NUMBER: 03-081P
CHECKED:		SHEET 2 OF 2